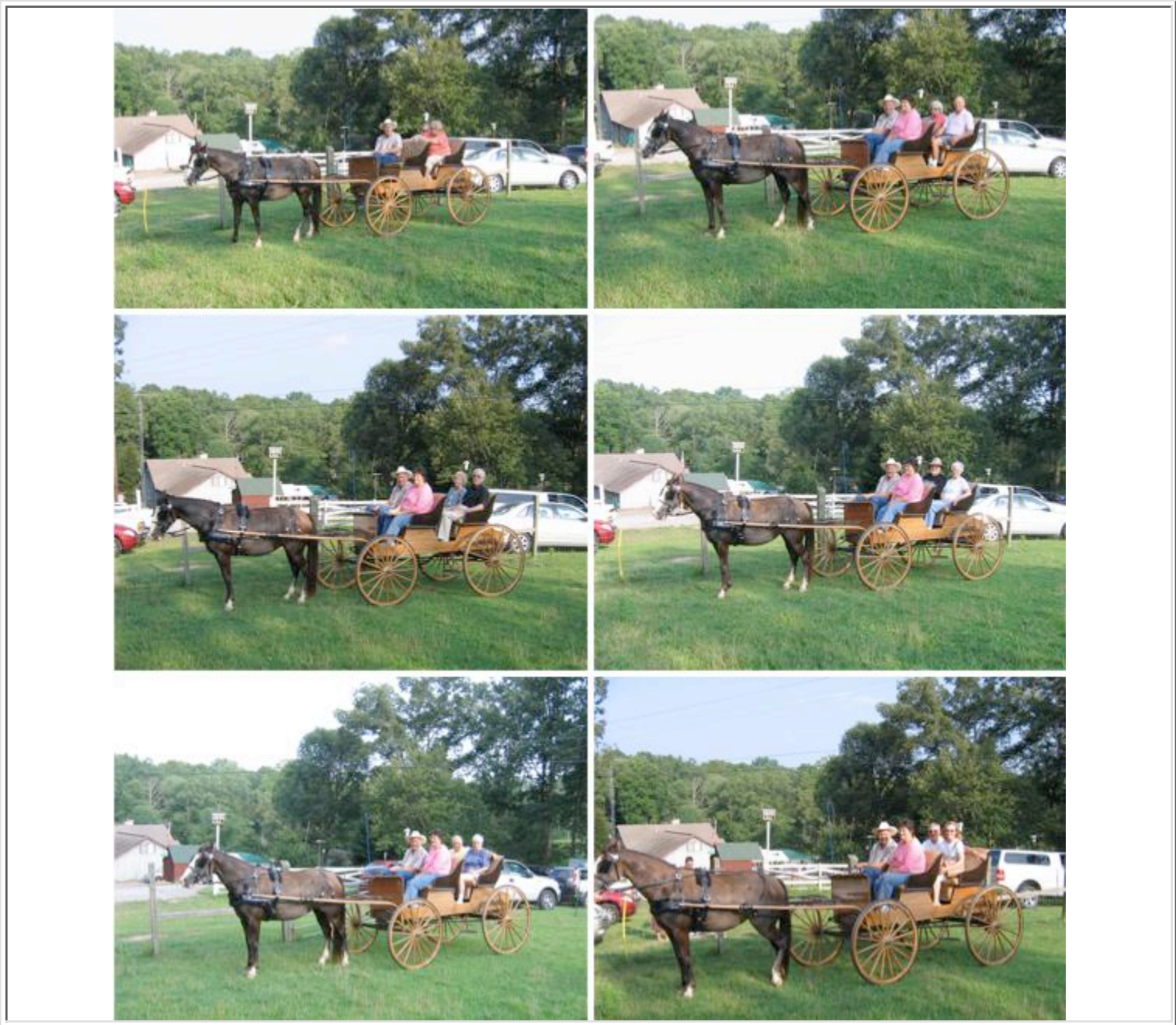


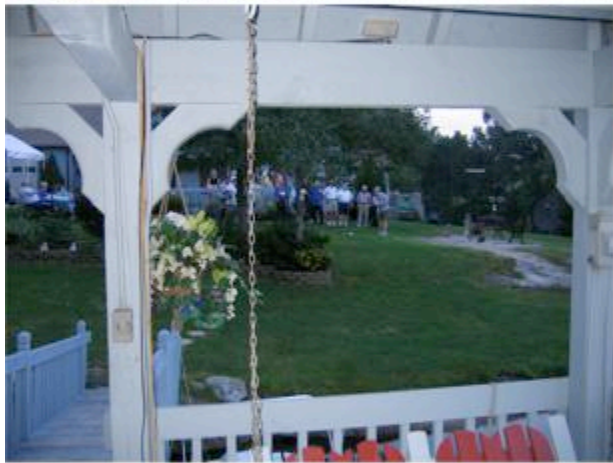
Picnic 2006

Crossville Model Railroad Club
I-40 Exit 320 - In the Factory Outlet Building
Crossville, TN 38555
(Between Fairfield Glade and Lake Tansi)
Public Viewing Sat 10-5 - - Sun 1-4. and Friday (12-4) afternoons

The CMRC 2006 picnic was held at Ted & Denise's "G" scale layout with members arriving by horse and buggy.



**The CMRC 2006 picnic was held at Ted & Denise's "G" scale layout
The members enjoyed chiping golf balls across (more like in it) the pond.**



Also had time at the CMRC 2006 picnic to enjoy Dick's birthday cake.

[Home](#)

[Join](#)

[Club Layout Photos](#)

[Classifieds](#)

[Members Layouts](#)

[Events](#)

[E-Mail](#)

Map  It

No guarantee due to a number of factors including weather, hardware and software failures, operator error or power interruptions.

The club, which meets on the second Monday of each month, recently held it's Picnic party at Jim & Ann's home.

"This was really an exciting time for us in the club,"